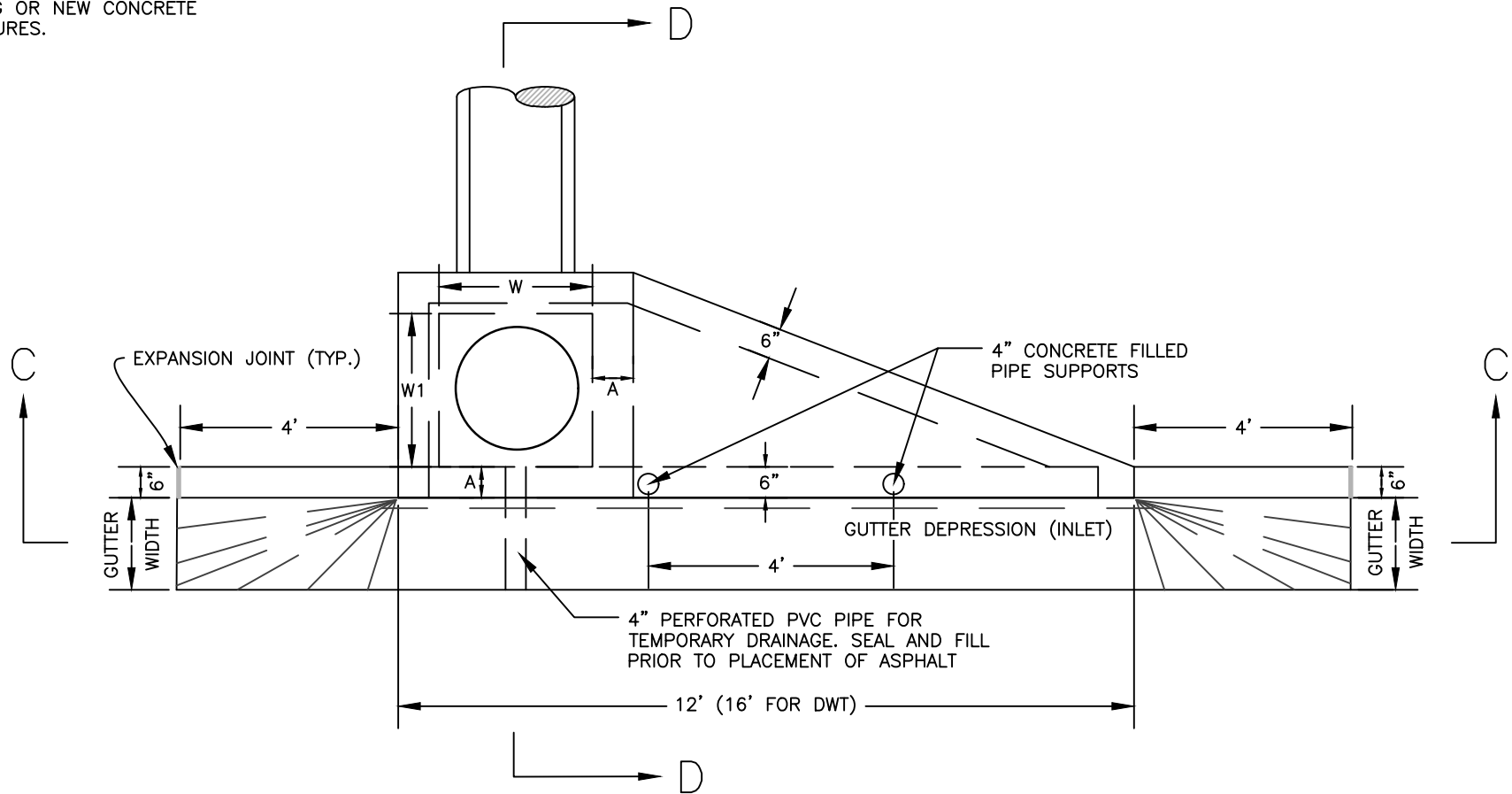


NOTES:

1. IF DEPTH EXCEEDS 4', INSTALL STEPS.
2. WING TRAPS CAN BE EITHER BRICK OR PRECAST CONCRETE, MINIMUM 3,000 PSI. PRECAST "KNOCKOUT" BOXES ARE NOT ALLOWED.
3. EXPANSION JOINT MATERIAL REQUIRED WHEN CONSTRUCTED ADJACENT TO EXISTING OR NEW CONCRETE STRUCTURES.



DIMENSION A:  
 6" FOR PRECAST OPTION  
 8" FOR BRICK OPTION

FOR SECTION C-C: SEE DETAIL 6.03  
 FOR SECTION D-D: SEE DETAIL 6.04  
 FOR DIMENSIONS W & W1: SEE DETAIL 6.05

NOT TO SCALE

SINGLE WING TRAP

6.01

DATE	BY	DESCRIPTION
2/16/23	BGM	CHANGE FONT, TITLE BLOCK
1/06/25	BGM	MISC UPDATES