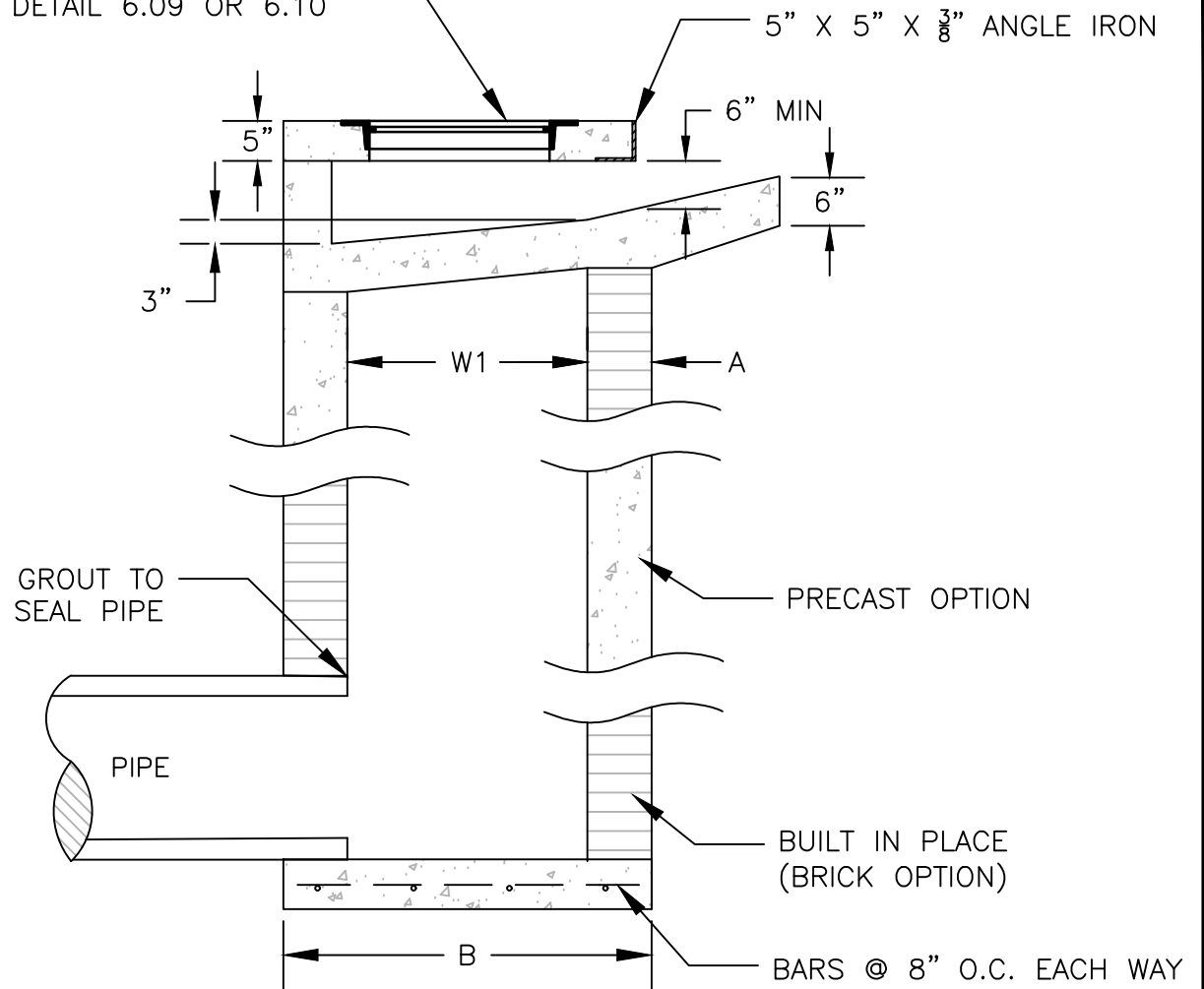


DIMENSION A:  
 6" FOR PRECAST OPTION  
 8" FOR BRICK OPTION  
 FOR DIMENSION W1 & B:  
 SEE DETAIL 6.05

FRAME & COVER SEE  
 DETAIL 6.09 OR 6.10



- NOTES:
1. ALL CONCRETE TO BE 3,000 PSI.
  2. IF DEPTH EXCEEDS 4', INSTALL STEPS.
  3. ALL REBAR TO BE #5.
  4. MAINTAIN 1 1/2" CLEAR SPACE BETWEEN STEEL AND BOTTOM OF BASE
  5. EXPANSION JOINT MATERIAL REQUIRED WHEN CONSTRUCTED ADJACENT TO EXISTING OR NEW CONCRETE STRUCTURES.

NOT TO SCALE

WING TRAP  
 SECTION D-D

6.04

DATE	BY	DESCRIPTION
2/16/23	BGM	CHANGE FONT, TITLE BLOCK
1/06/25	BGM	MISC UPDATES