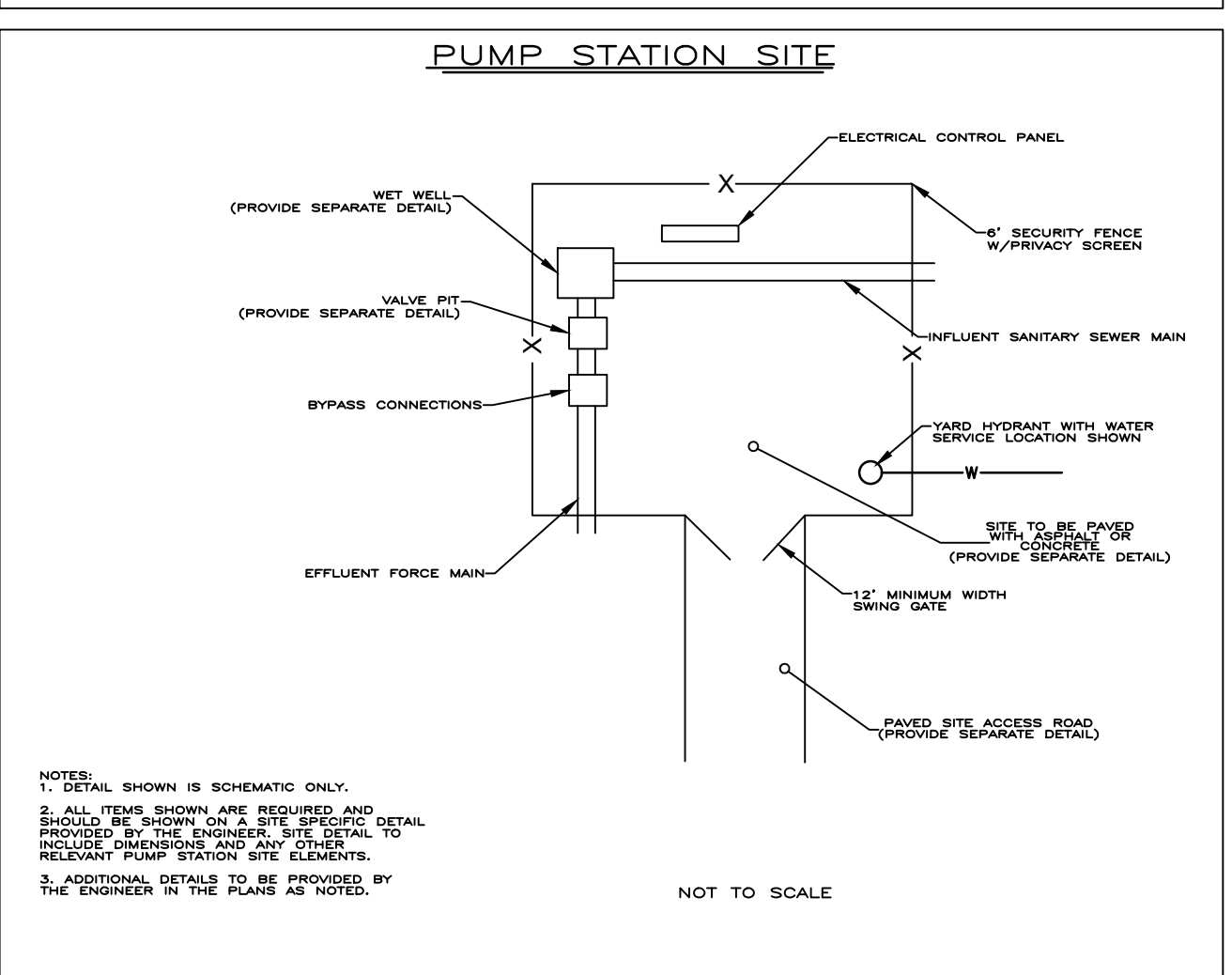
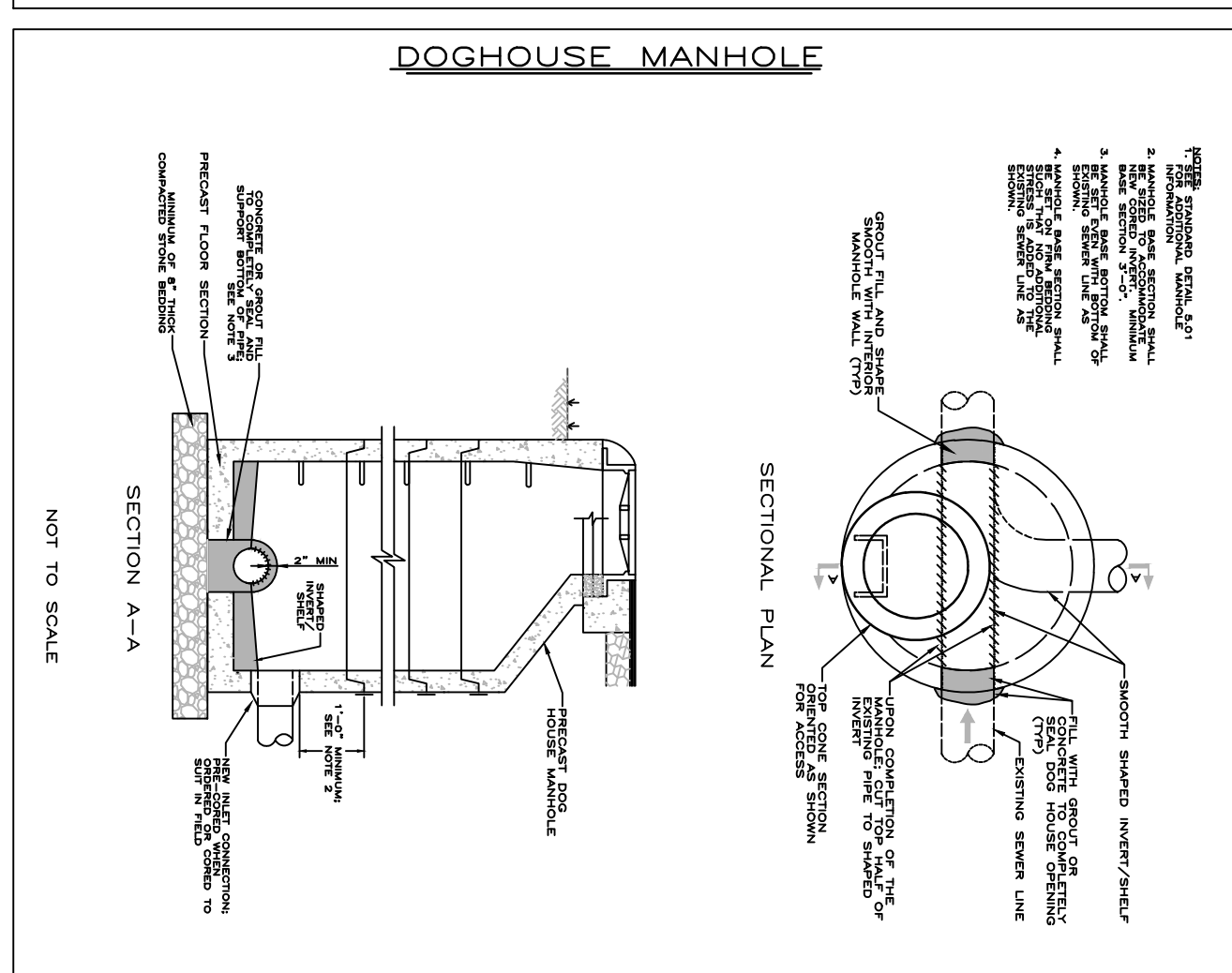
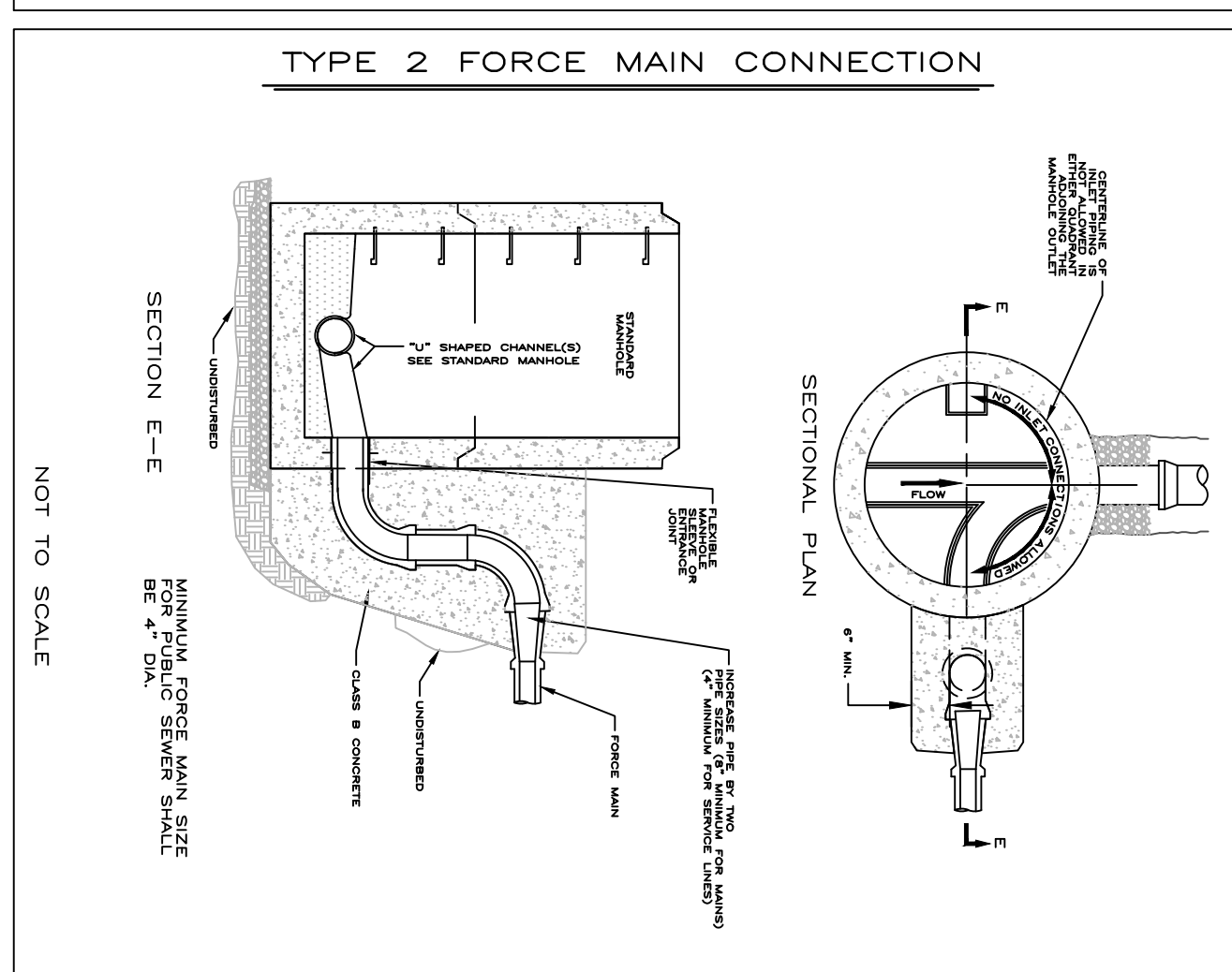
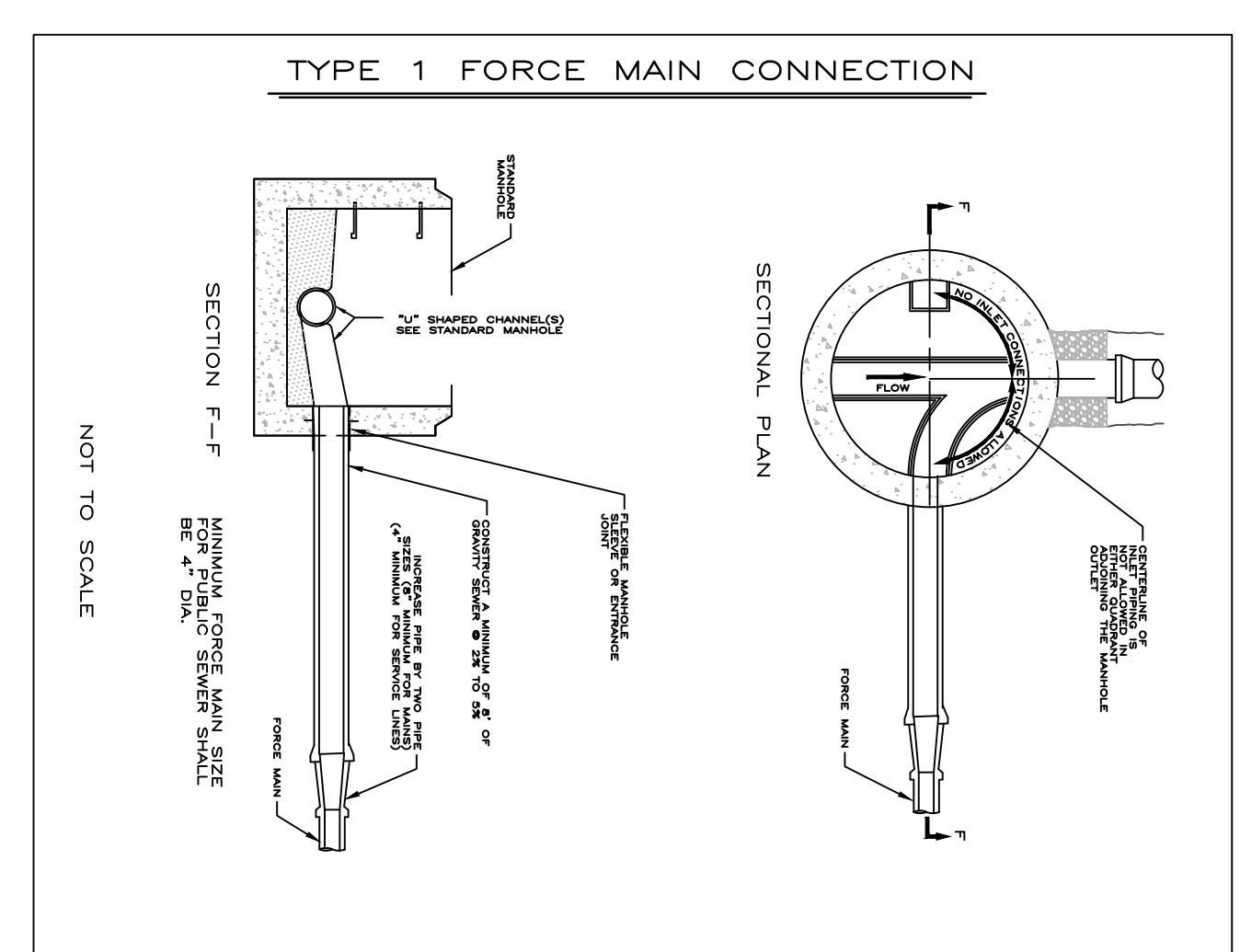
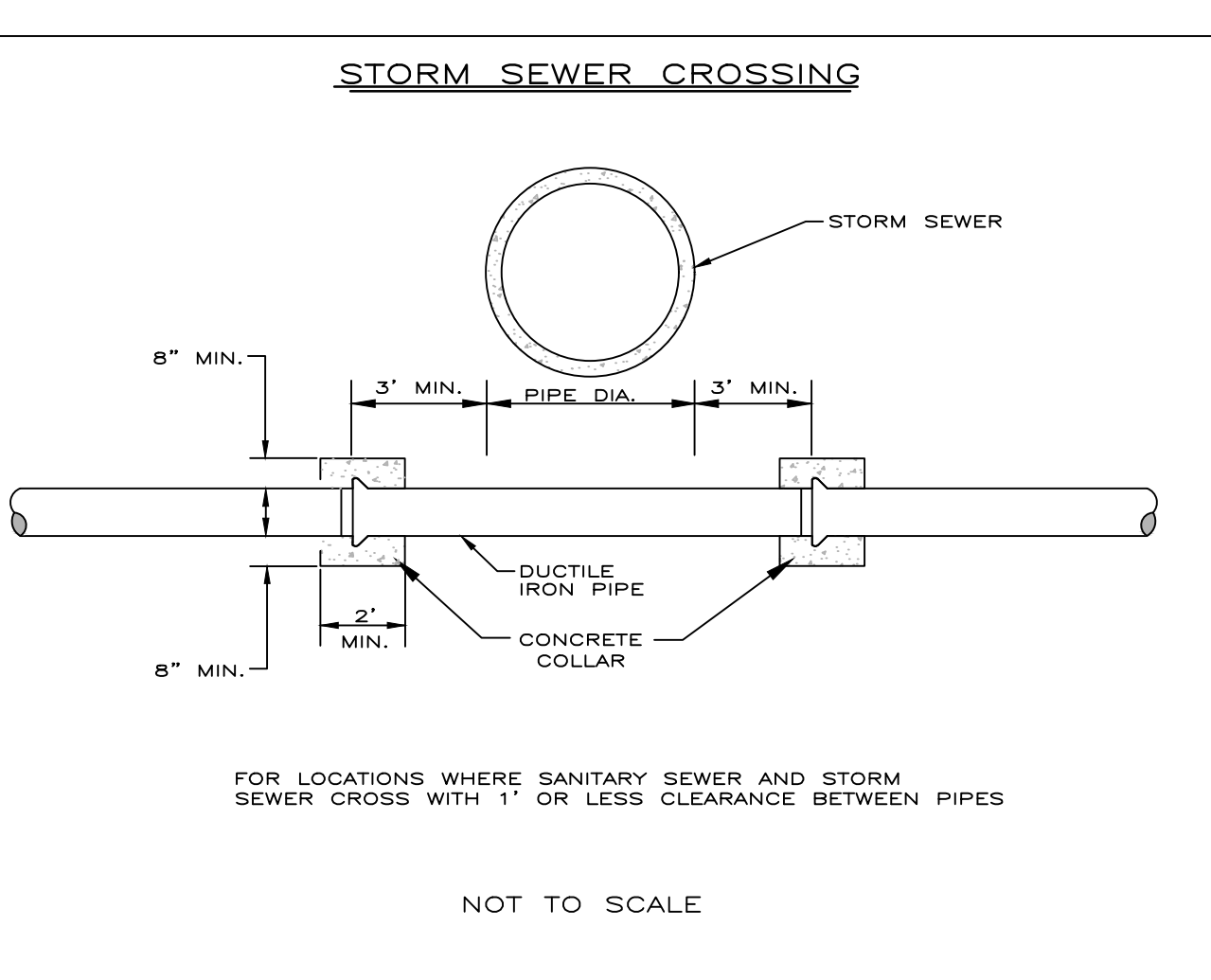


PIPE SUPPORT PIER FOR WATER CROSSING

PIPE DIAMETER	STEM DIAMETER	STEM HEIGHT	FOOTING SIZE			FOOTING (L)	FOOTING (W)	STEM CONC. VOL. (CU. YD.)	STEM STEEL (LBS.)	FOOTING CONC. VOL. (CU. YD.)	FOOTING STEEL WT. (LBS.)	
			"L"	"W"	"H"							
8"	2'-6"	1'-3"	10#4	8'-0"	2'-0"	5'-6"	6#5	9#4	0.18	9.04	3.26	77.0
10"	3'-0"	1'-3"	10#5	10'-0"	2'-6"	5'-0"	6#5	11#4	0.26	12.79	4.63	92.5
12"	3'-6"	1'-3"	10#5	10'-0"	2'-6"	5'-0"	6#5	11#4	0.26	12.79	4.63	92.5
14"	4'-0"	1'-3"	10#6	12'-0"	2'-8"	5'-0"	6#6	13#5	0.36	17.38	6.52	179.2
16"	4'-6"	1'-3"	10#6	12'-0"	2'-8"	5'-0"	6#6	13#5	0.36	17.38	6.52	179.2
18"	5'-0"	1'-3"	10#8	14'-0"	3'-0"	6'-0"	7#8	15#6	0.36	26.65	9.33	376.2
20"	5'-6"	1'-3"	14#6	14'-0"	3'-0"	6'-0"	6#5	12#5	0.36	18.14	5.99	122.0
		1'-3"	14#6	14'-0"	3'-0"	6'-0"	7#6	13#5	0.36	24.57	8.00	195.5
		1'-3"	14#6	14'-0"	3'-0"	6'-0"	7#7	15#6	0.36	24.57	9.33	317.1
		1'-3"	14#8	15'-0"	3'-6"	6'-0"	7#8	16#6	0.36	40.92	11.67	403.2
		1'-3"	14#8	15'-0"	3'-6"	6'-0"	7#5	12#5	0.36	18.14	6.11	145.5
		1'-3"	14#6	13'-0"	3'-0"	6'-0"	7#6	14#6	0.36	24.57	8.67	247.1
		1'-3"	14#6	14'-0"	3'-4"	7'-0"	8#7	15#6	0.36	24.57	12.10	367.2
		1'-3"	14#8	15'-0"	4'-0"	7'-0"	8#8	16#6	0.36	40.92	15.56	465.9

NOT TO SCALE



North Augusta
South Carolina's Riverfront

REVISIONS			
DATE	BY	DESCRIPTION	PAGE
8/26/23	BMH	CREATED COVERED DETAIL	1
1/28/24	BMH	ADDED NEW DETAILS	1

SECTION 5 - SANITARY SEWER DETAILS

Prepared By:
City of North Augusta
Engineering Department
100 Georgia Avenue
2nd Floor
North Augusta, South Carolina 29841